

Queensland COLLECTION



KAKADUWINTER SNOW CAP



materials

- 100g of Queensland Collection **Kakadu** shade #04 Ruby.
- 50g of Mirasol **Nuna** shade #1050 Timberwolf.
- US 9/5,5mm 16in circular & double-pointed needles.
- 1 stitch marker for end of round.

gauge

14sts per 4in/10cm in ribbing with US 9 and yarn doubled.
Adjust needle size to obtain proper gauge.

abbreviations

dec	decrease(ing)	ssk	slip, slip, knit (sl1 k-wise, sl1 k-wise, knit those 2 sl sts together)
k	knit	st	stitch
kp	knit 1, purl 1 into the double yarn over	tog	together
p	purl	yo	yarn over
pm	place marker	2yo	yo twice in a row
sl	slip		
sm	slip marker		

acknowledgements

Garment design & photography by **Nancy Nagle** for **Nangellini Designs**.

This fun lacy hat is a quick knit. It is worked with both yarns held double throughout. Wind the Kakadu and Nuna together into a center-pull ball and work with both ends, using with the inside and the outside ends of the yarn simultaneously. Be mindful that you catch all the strands as you knit. The eyelets make the work go fast and keeps the pattern engaging and fun to do!

instructions

CAST ON

Loosely cast on 72 sts, PM, join to work in the round on first row.

RIBBING

Round 1: (k2, p2) repeat around.

Repeat Round 1 for 10 rows.

BODY OF HAT

Round 2: (k, ssk, 2yo, k2tog, k, p2) repeat around.

Round 3: (k2, kp into double yo, k2, p2) repeat around.

Repeat Rounds 2 and 3 seven more times (for a total of eight repeats).

DECREASING TOP OF HAT

Dec Rnd 1: (k1, ssk, yo2, k2tog, k1, p2, k1, ssk, k2tog, k1, p2, k1, ssk, yo2, k2tog, k1, p2) repeat around.

Dec Rnd 2: (k3, p1, k2, p2, k4, p2, k3, p1, k2, p2) repeat around.

Dec Rnd 3: (k1, ssk, yo2, k2tog, ssk, p1, k4, p1, k2tog, ssk, yo2, k2tog, k1, p2) repeat around.

Dec Rnd 4: (k3, p1, k2, p1, k4, p1, k3, p1, k2, p2) repeat around.

Dec Rnd 5: (k1, ssk, yo2, k2tog, ssk, k4, k2tog, ssk, yo2, k2tog, k1, p2) repeat around.

Dec Rnd 6: (k3, p1, k9, p1, k2, p2) repeat around.

Dec Rnd 7: (k1, ssk, yo2, k2tog, ssk, k2, k2tog, ssk, yo2, k2tog, k1, p2) repeat around.

Dec Rnd 8: (k3, p1, k7, p1, k2, p2) repeat around.

Dec Rnd 9: (k1, ssk, yo2, k2tog, ssk, k2tog, ssk, yo2, k2tog, k1, p2) repeat around.

Dec Rnd 10: (k3, p1, k5, p1, k2, p2) repeat around.

Dec Rnd 11: (k1, ssk, k2tog, k2, ssk, k2tog, k1, p2) repeat around.

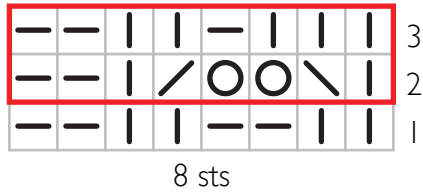
Dec Rnd 12: (k8, p2) repeat around.

Dec Rnd 13: (k2, ssk, k2tog, k2, p2) repeat around.

Dec Rnd 14: (k6, p2) repeat around.



Body Chart



Dec Rnd 15: (k1, ssk, k2tog, k1, p2) repeat around.

Dec Rnd 16: (k4, p2) repeat around.

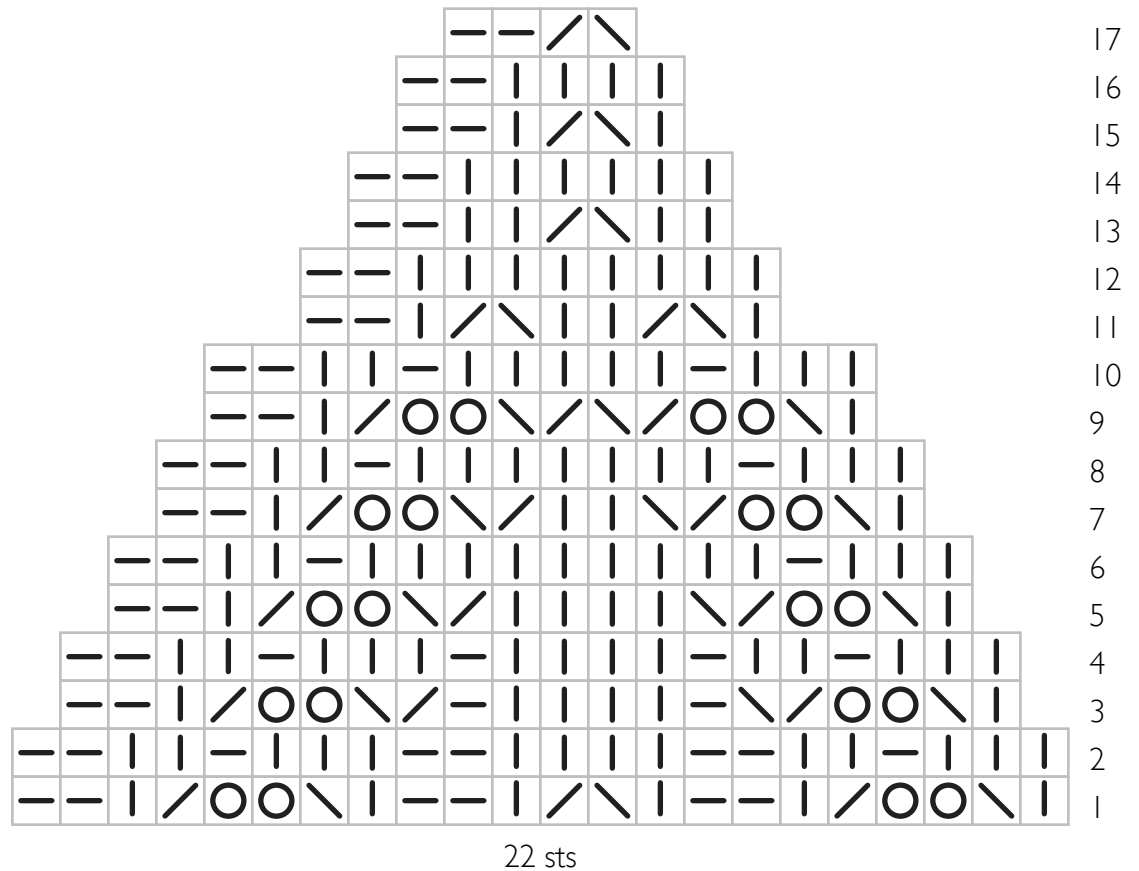
Dec Rnd 17: (ssk, k2tog, p2) repeat around.

Weave in all tails securely.

BLOCK

Block by soaking in water and pressing out excess water. Place on a dinner plate, drawing in ribbing and allow to dry. Q

Decreasing Chart



Key

