



SUPERSOFT
CAPE & ORIENTAL BAG



SUPERSOFT CAPE

SIZE

Italian size 44 = US size 10 (approx. Medium).

MATERIALS

- 16 50g balls of Lana Gatto **SUPERSOFT** shade #13349 Mocha.
- One pair size US 4 (3.5mm) needles or size to obtain gauge.
- One pair size US 7 (4.5mm) needles or size to obtain gauge.
- Cable needle.
- Tapestry needle with rounded point.
- 6 small buttons.
- 2 snap fasteners.
- 2 stripes in jersey fabric 1in x 4in / 3 x 10cm each.

STITCHES

USING KNITTING NEEDLES:

Tubular stitch (worked on even number of sts)

Row 1: k2, * wyif, slip 1 st purlwise, wyib, k1, rep from * to end.
Row 2: wyif, slip 1 st purlwise, * k1, wyif, slip 1 st purlwise, wyib, rep from * to last st, k1.
Rep these 2 rows.

Stockinette stitch

Reverse Stockinette stitch

2x2 Rib (multiple of 4 sts plus 2)

Row 1: *k2, p2; rep from * to last 2 sts, k2.
Row 2: k the knit sts and p the purl sts.
Rep Row 2 for 2x2 Rib.

Sailor's Rib (work on odd number of sts)

Row 1: p1, * k1, p1, rep from * to end.
Row 2: k1, * p1, k1-below (knit 1 st inserting needle into st of row below); rep from * to last 2 sts, p1, k1.
Rep these 2 rows throughout for Sailor's Rib.

Two crossed stitches (over 2 sts)

Row 1 (RS): k2.
Row 2: p2.
Row 3: k2.
Row 4: slip 1 st on cable needle and hold to back, p1 st, p1 from cable needle.
Row 5: k2.
Row 6: p2.

Row 7: slip 1 st on cable needle and hold to back, k1 st, k1 from cable needle.

Row 8: p2.

Rep Rows 1-8.

Cable (over 10 sts)

Row 1 (RS): p2, k6, p2.

Row 2: k2, p6, k2.

Row 3: p2, k6, p2.

Row 4: k2, 6 st Left Cable on WS: slip 3 sts to cable needle and hold to front of work, p3 sts, p3 sts from cable needle, k2.

Rows 5, 7, 9 and 11: p2, k6, p2.

Rows 6, 8, 10 and 12: k2, p6, k2.

Row 13: p2, 6 st Left Cable on RS: slip 3 sts to cable needle and hold to front of work, k3 sts, k3 sts from cable needle, p2.

Row 14: k2, p6, k2.

Rows 15, 17 and 19: p2, k6, p2.

Rows 16, 18 and 20: k2, p6, k2.

Rep Rows 3-20 for Cable.

Fancy Diamond Pattern (over 22 sts) see Chart.

On even rows (WS) k the knit sts and p the purl sts. Rep Rows 1-24 for Fancy Diamond Pattern.

Work Cable sts as follows:

3 st Left Cable: slip 2 sts to cable needle and hold to front of work, p1 st, k2 sts from cable needle.

3 st Right Cable: slip 1 st to cable needle and hold to back of work, k2 sts, p1 st from cable needle.

4 st Left Cable: slip 2 sts to cable needle and hold to front of work, k2 sts, k2 sts from cable needle.

4 st Right Cable: slip 4 sts to cable needle and hold to back of work, k2 sts, k2 sts from cable needle.

GAUGE

17 sts and 34 rows to 4in/10cm over Sailor's Rib using size US 7 (4.5mm) needles.

22 sts and 27 rows to 4in/10cm over Fancy Diamond patt using size US 7 (4.5mm) needles.

Cable (10 sts) measures 1½ in/4cm.



SUPERSOFT CAPE

ABBREVIATIONS

beg	begin[ning]	patt	pattern
cm	centimeters	rem	remain[ing]
cont	continue[ing]	rep	repeat
dec	decrease[ing]	RS	right side[s]
dpn	double-pointed needle	st[s]	stitch[es]
g	grams	tog	together
in	inch[es]	WS	wrong side[s]
k	knit	wyib	with yarn in back
mm	millimeters	wyif	with yarn in front
p	purl		

BACK

Using size US 4 (3.5mm) needles cast on 54 sts. Work 4 rows in Tubular st and 10 rows in 2x2 Rib. Change to size US 7 (4.5mm) needles. Work in Sailor's Rib, dec 13 sts evenly distributed across 1st row. 41 sts rem. Work even until piece measures 21½in/55cm from beg. Bind off all sts.

LEFT SIDE PART

Using size US 4 (3.5mm) needles cast on 192 sts. Work 4 rows in Tubular st and 10 rows in 2x2 Rib. Change to size US 7 (4.5mm) needles. Work 6 rows in Sailor's Rib, dec 45 sts evenly distributed across 1st row. 147 sts rem. Next row (RS - dec row): 4 sts in Sailor's Rib, k3 tog (3 stitches become 1), work in Sailor's Rib until to last 7 sts: sssk (= slip 3 sts separately to right needle as if to knit, slip left needle into these 3 sts from left to right and knit them together: 3 stitches become 1), 4 sts in Sailor's Rib. Work 3 rows even in Sailor's Rib. Rep last 4 rows 30 times more. When piece measures 17 ¼in/44cm from beg, bind off rem 23 sts.

RIGHT SIDE PART

Work as Left Side Part

FRONT

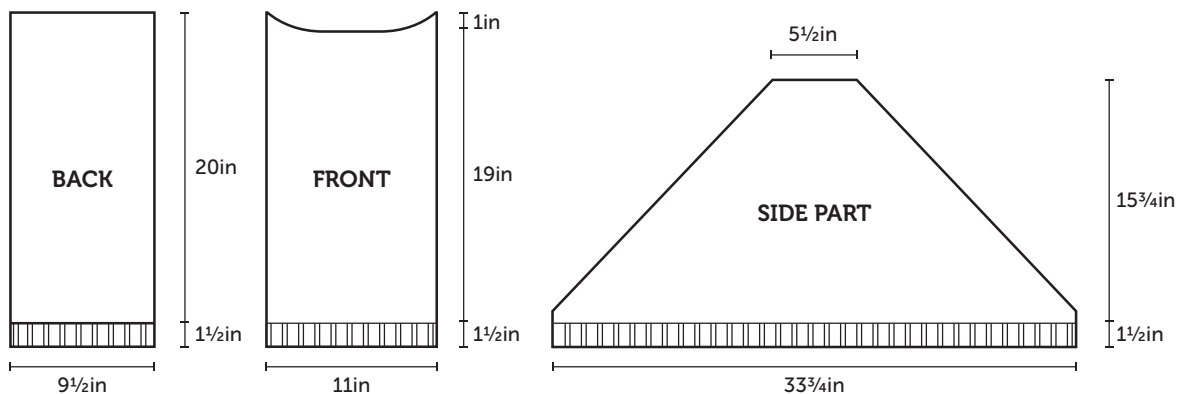
Using size US 4 (3.5mm) needles cast on 74 sts. Work 4 rows in Tubular st and 10 rows in 2x2 Rib. Change to size US 7 (4.5mm) needles. Dec 14 sts evenly distributed across 1st row (60 sts rem) and work as follows: 1 selvedge st, 1 st Reverse Stockinette st, 1 st Stockinette st, 2 sts Reverse Stockinette st, Two Crossed sts, 10 sts Cable, Two Crossed sts, 22 sts Fancy Diamond patt, Two Crossed sts, 10 sts Cable, Two Crossed sts, 2 sts Reverse Stockinette st, 1 st Stockinette st, 1 st Reverse Stockinette st, 1 selvedge st. Work even until piece measures 20½in/48cm from beg, ending with a WS row. Shape neck. Next row (RS): work 17 sts, join another ball of yarn and bind off center 26 sts, work to end. Working both sides at once, bind off from each neck edge 5 sts once and 4 sts 3 times. No sts remain.

COWL

Using size US 7 (4.5mm) needles cast on 131 sts. Work 4 rows in Tubular st. Cont to work in Sailor's Rib. When piece measures 9½in/24cm from beg, bind off all sts.

FINISHING

Join Side Parts to Back and Front. Make hems all around jersey stripes and sew each stripe over center sts of Side Parts, all along length. Sew 3 buttons in the middle of each stripe. Sew Cowl seams. Place this seam at half Back and sew bound-off sts of cowl to neck-edge. Sew snap fasteners inside 15cm from side seams of each Side Part, to create lower sleeve opening.

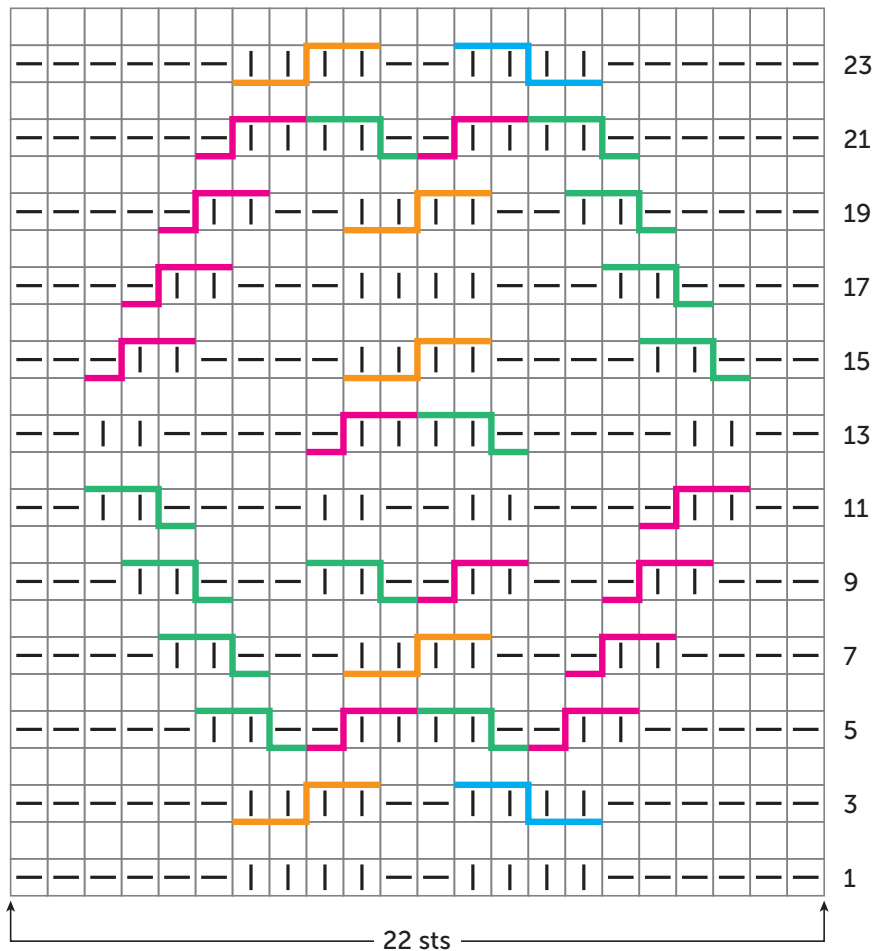




SUPERSOFT CAPE

Fancy Diamond Pattern

Row 25: rep from Row 1



Key

█ k

— p

4 st Left Cable: *slip 2 sts to cable needle and hold to front of work, k2 sts. K2 sts from cable needle.*

4 st Right Cable: *slip 4 sts to cable needle and hold to back of work, k2 sts. K2 sts from cable needle.*

3 st Left Cable: *slip 2 sts to cable needle and hold to front of work, p1 st. K2 sts from cable needle.*

3 st Right Cable: *slip 1 st to cable needle and hold to back of work, k2 sts. P1 st from cable needle.*

Each square corresponds to 1 st and 1 row.



SUPERSOFT ORIENTAL BAG

MATERIALS

- 5 50g balls of Lana Gatto **WENGEN** shade #7187 Orange/Grey/Beige **OR** 3 100g balls of Debbie Bliss **ROMA** shade #01 Ecru.
- One pair size US 6 (4mm) needles or size to obtain gauge.
- Two double-pointed needles.
- Tapestry needle with rounded point.
- 2 bamboo bails (or 2 semicircular handles) 10in/25cm in diameter with holes at ends.
- 1 beaded trinket with tassel for fastener.
- Heavy cotton fabric for lining.
- Thread and needle for sewing.

STITCHES

USING KNITTING NEEDLES:

Tubular stitch (work on odd number of sts)

Row 1: k1, * wyif, slip 1 st purlwise, wyib, k1, rep from * to end.

Row 2: wyif, slip 1 st purlwise, * k1, wyif, slip 1 st purlwise, wyib, rep from * to end.

Rep these 2 rows.

Tubular stitch (worked on even number of sts)

Row 1: k2, * wyif, slip 1 st purlwise, wyib, k1, rep from * to end.

Row 2: wyif, slip 1 st purlwise, * k1, wyif, slip 1 st purlwise, wyib, rep from * to last st, k1.

Rep these 2 rows.

Garner stitch

Stockinette stitch

Reverse Stockinette stitch.

Ladder stitch (multiple of 14 sts plus 7)

Rows 1-3: work in Garner stitch (all rows k).

Row 4: p7, * k7, p7; rep from * to end.

Rep Rows 1-4 for Ladder Stitch.

Smock stitch (multiple of 6 sts)

Row 1 (RS): * p2, k2, p2; rep from * to end.

Row 2 and even rows (WS): knit the k sts and purl the p sts.

Row 3: work as Row 1.

Row 5: *slip 2 sts to dpn and hold to back of work, k1 st, p2 sts from dpn; slip 1 st to dpn and hold to front of work, p2 sts, k1 st from dpn; rep from * to end.

Rows 7 and 9: * k1, p4, k1; rep from * to end.

Row 11: * slip 1 st to dpn and hold to front of work, p2 sts, k1

st from dpn; slip 2 sts to dpn and hold to back of work, k1 st, p2 sts from dpn; rep from * to end.

Row 12: knit the k sts and purl the p sts.

Rep Rows 1-12 for Smock stitch.

Cable Pattern (over 6 sts)

Row 1 (RS): k6.

Row 2 and even rows (WS): p6.

Row 3: slip 2 sts to dpn and hold to front of work, slip 2 sts to another dpn and hold to back of work, k2 sts, k2 sts from Front dpn, k2 sts from Back dpn.

Row 5: k6.

Row 7: work as Row 3.

Rows 9, 11, 13 and 15: k6.

Row 16: p6.

Rep Rows 1-16 for Cable patt.

USING TAPESTRY NEEDLE:

Darning stitch

GAUGE

16 sts and 20 rows to 4in/10cm over Stockinette st, using size US 6 (4mm) needles.

16 sts and 24 rows to 4in/10cm over Ladder stitch, using size US 6 (4mm) needles.

19 sts and 21 rows to 4in/10cm over Smock stitch, using size US 6 (4mm) needles.

Cable Pattern (6 sts) measures 1½in/4cm.

ABBREVIATIONS

beg	begin[ning]	p	purl
cm	centimeters	rem	remain[ing]
dec	decrease[ing]	rep	repeat
dpn	double-pointed needle	RS	right side[s]
g	grams	st[s]	stitch[es]
in	inch[es]	WS	wrong side[s]
k	knit	wyib	with yarn in back
mm	millimeters	wyif	with yarn in front



SUPERSOFT ORIENTAL BAG

BACK PANEL

Using size US 6 (4mm) needles cast on 65 sts. Work 1st and last st in Reverse Stockinette st, for side edgings, and center 63 sts in ladder stitch. Work even until piece measures 13³/₄in/34cm from beg. Work 12 rows in Tubular st. Bind off in Darning st with tapestry needle.

FRONT PANEL

Using size US 6 (4mm) needles cast on 83 sts. Work 1st and last st in Reverse Stockinette st, for side edgings, and center 81 sts as follows: 30 sts in Smock st, 3 sts in Reverse Stockinette st, 6 sts in Cable patt, 3 sts in Reverse Stockinette st, 6 sts in Cable patt, 3 sts in Reverse Stockinette st, 30 sts in Smock st. Work even until piece measures 13³/₄in/34cm from beg. Work 12 rows in Tubular st. Bind off in Darning st with tapestry needle.

BASE

Using size US 6 (4mm) needles cast on 65 sts. Work 2 rows in Garter st. Then work for 6¹/₄in/16cm as follows: work 1st and last st in Reverse Stockinette st, and work center 63 sts in Stockinette st. Work 2 rows in Garter st. Bind off all sts.

SIDE GUSSET (MAKE 2)

Using size US 6 (4mm) needles cast on 20 sts. Work 2 rows in Garter st. Then work as follows: work 1st and last st in Reverse Stockinette st, and work center 18 sts in Stockinette st. Work even until piece measures 13³/₄in/34cm from beg. Work 12 rows in Tubular st. Bind off in Darning st with tapestry needle.

STRIPE FOR TRINKET FASTENER

Using size US 6 (4mm) needles cast on 21 sts. Work 4 rows in Garter st and 24 rows in ladder st. Then work other 12 rows in ladder st dec each side 1 st every other row 6 times. 9 sts rem. Work other 4 rows. Bind off rem 9 sts.

FINISHING

Use the 5 main pieces (Front and Back panels, base and 2 side gussets) as template and place them onto the fabric. Drawing around each shape, cut out fabric for lining leaving a 1/2in/1cm gap for seam allowance. Sew Back and Front Panels to base and side gussets. Sew lining pieces in the same manner. Place lining inside the bag, WS against WS, and pin in place, making a double hem at the top, below Tubular st rows. Sew in place, going through the lining fabric. Sew last 4 rows of Stripe around trinket to opposite side of tassel. Join cast-on sts of Stripe to upper edge of Back Panel, at center, below Tubular st rows. Sew handles to upper edge sides of Back and Front Panel 