



**SUPERSOFT**  
CABLED TOP



# SUPERSOFT CABLED TOP

## SIZE

Italian size 44 = US size 10 (approx. Medium).

## MATERIALS

- 10 50g balls of Lana Gatto **SUPERSOFT** shade #10180 Lilac.
- One pair size US 6 (4mm) needles or size to obtain gauge.
- One pair size US 8 (5mm) needles or size to obtain gauge.
- Cable needle.
- Tapestry needle with rounded point.

## STITCHES

### USING KNITTING NEEDLES:

#### Tubular stitch (work on even number of sts)

**Row 1:** k2, \* wyif, sl 1 st purlwise, wyib, k1, rep from \* to end.

**Row 2:** wyif, sl 1 st purlwise, \* k1, wyif, sl 1 st purlwise, wyib, rep from \* to last st, k1.

Rep these 2 rows.

#### Stockinette stitch

#### Reverse Stockinette stitch

#### 2x2 Rib (multiple of 4 sts plus 2)

**Row 1:** \*k2, p2; rep from \* to last 2 sts, k2.

**Row 2:** k the knit sts and p the purl sts.

Rep Row 2 for 2x2 Rib.

#### Fancy Diamond Pattern A (see Chart)

On even rows (WS) k the knit sts and p the purl sts. Rep Rows 1-20 for Fancy Diamond Pattern A.

#### Fancy Diamond Pattern B (see Chart)

On even rows (WS) k the knit sts and p the purl sts. Work Rows 1-20, then rep Rows 5-20 for Fancy Diamond Pattern B. Work Cable sts as follows:

**4 st Left Cable:** sl 2 sts to cable needle and hold to front of work, k2 sts, k2 sts from cable needle.

**4 st Right Cable:** sl 4 sts to cable needle and hold to back of work, k2 sts, k2 sts from cable needle.

**3 st Left Cable:** sl 2 sts to cable needle and hold to front of work, P 1 st, k2 sts from cable needle.

**3 st Right Cable:** sl 1 st to cable needle and hold to back of work, k2 sts, p1 st from cable needle.

#### Cable Pattern (over sts)

**Row 1 (RS):** k5.

**Row 2 and even rows (WS):** p5.

**Rows 3 and 5:** k5.

**Row 7:** sl 3 sts to cable needle and hold to front of work, k2 sts, k3 sts from cable needle (Left-slanted cable).

**Row 8:** p5.

Rep Rows 1-8 for Cable patt.

## GAUGE

17 sts and 26 rows to 4in/10cm over Reverse Stockinette st, using larger needles.

Fancy Diamond Pattern A and B (14 sts) measures 2<sup>1</sup>/<sub>4</sub>in/6cm.

Cable Pattern (5 sts) measures <sup>3</sup>/<sub>4</sub>in/2cm.

## ABBREVIATIONS

cm	centimeters	rem	remain[ing]
cont	continue[ing]	rep	repeat
dec	decrease[ing]	RS	right side[s]
g	grams	st[s]	stitch[es]
in	inch[es]	WS	wrong side[s]
k	knit	wyib	with yarn in back
mm	millimeters	wyif	with yarn in front
p	purl	yo	yarn over
patt	pattern		

## BACK

Using smaller needles cast on 86 sts. Work 4 rows in Tubular st and 22 rows in 2x2 Rib for waistedge. Change to larger needles, dec 22 sts evenly distributed across first row. 64 sts rem. Work even until piece measures 7in/18cm from waistedge. Bind off all sts.

## FRONT

Work as Back.

## YOKE

Using larger needles cast on 55 sts. Work as follows: 9 sts Reverse Stockinette st, 14 sts Fancy Diamond Patt B, 4 sts Reverse Stockinette st, 14 sts Fancy Diamond Patt A, 3 sts Reverse Stockinette st, 5 sts Cable Patt, 6 sts Reverse Stockinette st. Work even until piece measures 1in/3cm, ending with a RS row.

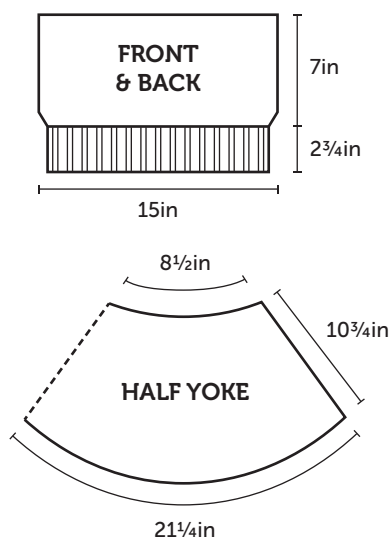


# SUPERSOFT CABLED TOP

Cont as follows to create rounded shape: \* work 13 sts, turn and leave rem sts on a spare needle, yo and work the 13 sts. Then work 31 sts, working yo together with next st; turn and leave rem sts on a spare needle, yo and work the 31 sts. Work 48 sts, working yo together with next st; turn and leave rem sts on a spare needle, yo and work the 48 sts. Work 51 sts, working yo together with next st; turn and leave rem sts on a spare needle, yo and work the 51 sts. Work 4 rows on all sts; rep from \* 25 times more. When piece measures approx 42½in/123cm on left side and 17in/43cm on right side, bind off all sts.

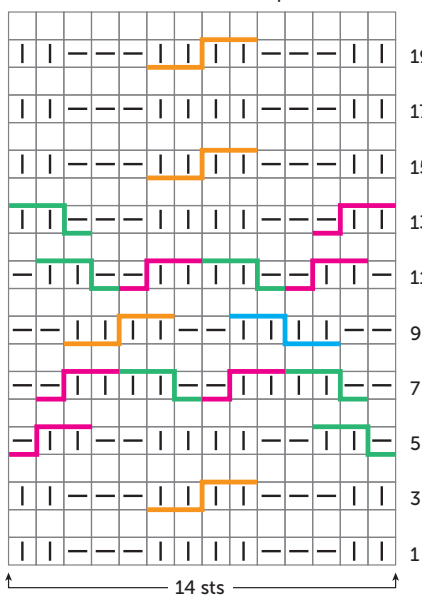
## FINISHING

Sew Front and Back side seams. Join yoke ends, sewing cast on sts to bound off sts. Place yoke seam to correspond to Back right side, sew left side of yoke, inside 3 sts from edge, to upper edge of Back, leave 9½in/24cm free on yoke side (for sleeve edge), cont to sew left side of yoke, inside 3 sts from edge, to upper edge of Front, leaving last 9½in/24cm free (for other sleeve edge). The 3 st edging creates a small roll on RS, as trimming 🐾



### Fancy Diamond Pattern A

Row 21: rep from Row 1



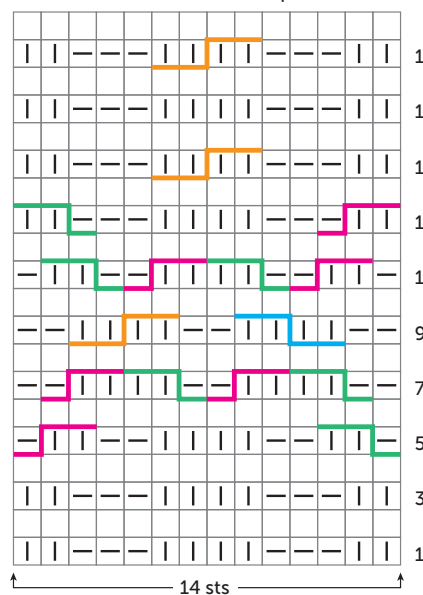
**Key** (Each square corresponds to 1 st and 1 row.)

K 4 st Left Cable: slip 2 sts to cable needle and hold to front of work, K2 sts. K2 sts from cable needle.

P 3 st Left Cable: slip 2 sts to cable needle and hold to front of work, P1 st. K2 sts from cable needle.

### Fancy Diamond Pattern B

Row 21: rep from Row 5



4 st Right Cable: slip 4 sts to cable needle and hold to back of work, K2 sts. K2 sts from cable needle.

3 st Right Cable: slip 1 st to cable needle and hold to back of work, K2 sts. P1 st from cable needle.