



FEELING
LACED PULLOVER



FEELING LACED PULLOVER

SIZE

Italian size 44 = US size 10 (approx. Medium).

MATERIALS

- 11 50g balls of Lana Gatto **FEELING** shade #12940 Wisteria.
- One pair size US 4 (3.5mm) needles or size to obtain gauge.
- Crochet hook size A-0 (2mm) or size to obtain gauge.
- Tapestry needle with rounded point.

STITCHES

USING KNITTING NEEDLES:

Tubular stitch (work on even number of sts)

Row 1: k2, * wyif, sl 1 st purlwise, wyib, k1, rep from * to end.

Row 2: wyif, sl 1 st purlwise, * k1, wyif, sl 1 st purlwise, wyib, rep from * to last st, k1.

Rep these 2 rows.

3x3 Rib (multiple of 6 sts)

Row 1: * k3, p3; rep from * to end.

Row 2: k the knit sts and p the purl sts.

Rep Row 2 for 3x3 Rib.

USING CROCHET HOOK:

Chain stitch [ch]

Slip stitch [sl st]

Single crochet [sc]

Double crochet [dc]

Shell stitch (over a multiple of 4 sts plus 1)

On odd rows: see Chart A, then Chart C.

On even rows: see Chart C, then Chart A, repeating Motif.

Rep Rows 2-11 throughout from Charts.

Diamond Stitch (over a multiple of 39 sts)

See Chart B. Then rep Rows 2-11 throughout.

GAUGE

27 sts and 10½ rows to 4in/10cm over Shell stitch, using size A-0 (2mm) crochet hook.

ABBREVIATIONS

beg	begin[ning]	patt	pattern
cm	centimeters	rep	repeat
cont	continue[ing]	RS	right side[s]
g	grams	st[s]	stitch[es]
in	inch[es]	tog	together
k	knit	WS	wrong side[s]
mm	millimeters	wyib	with yarn in back
p	purl	wyif	with yarn in front

BACK

Using size US 4 (3.5mm) needles cast on 156 sts. Work 4 rows in Tubular st, then cont to work in 3x3 Rib until Border measures 6¼in/16cm from beg. Bind off all sts. Using crochet hook, with RS of work join yarn to first bound off st of Border with a sl st, 1 ch (= first sc) and work a row of 101 sc along bound-off sts. There are 102 sc. Cut off yarn.

With RS, join yarn to first ch on previous row with a sl st, 3 ch, 2 dc into st at base of last 3 ch, rep twice Chart A Motif, rep 3 times Chart B Motif, rep twice Chart A Motif, then see Chart C. Work in Shell Stitch and in Diamond Stitch, as stated.

When piece measures 15in/38cm from Border (40 lace rows worked), shape armhole by decreasing an arch at each side as follows: at beg of next row work 3 sl sts into arch below, 3 ch (corresponding to first dc), 3 dc into next arch, cont in patt until to last arch. Work only 1 dc into last arch, turn. Work even 20 more rows. Cut off yarn and weave in ends.

FRONT

Work as for Back.

SLEEVES (MAKE 2)

Using size US 4 (3.5mm) needles cast on 108 sts and, for border, work 4 rows in Tubular st and cont in 3x3 Rib. When border measures 3 ½in/9cm from beg, bind off all sts. Using crochet hook, with RS of work join yarn to first bound off st of Border with a sl st, 1 ch (= first sc) and work a row of 74 sc along bound-off sts. There are 75 sc. Cut off yarn.

With RS, join yarn to first ch on previous row with a sl st, 3 ch, 2 dc into st at base of last 3 ch, rep twice Chart A Motif, rep twice Chart B Motif, rep twice Chart A Motif, then see Chart C. Work in Shell Stitch and in Diamond Stitch, as stated.



FEELING LACED PULLOVER

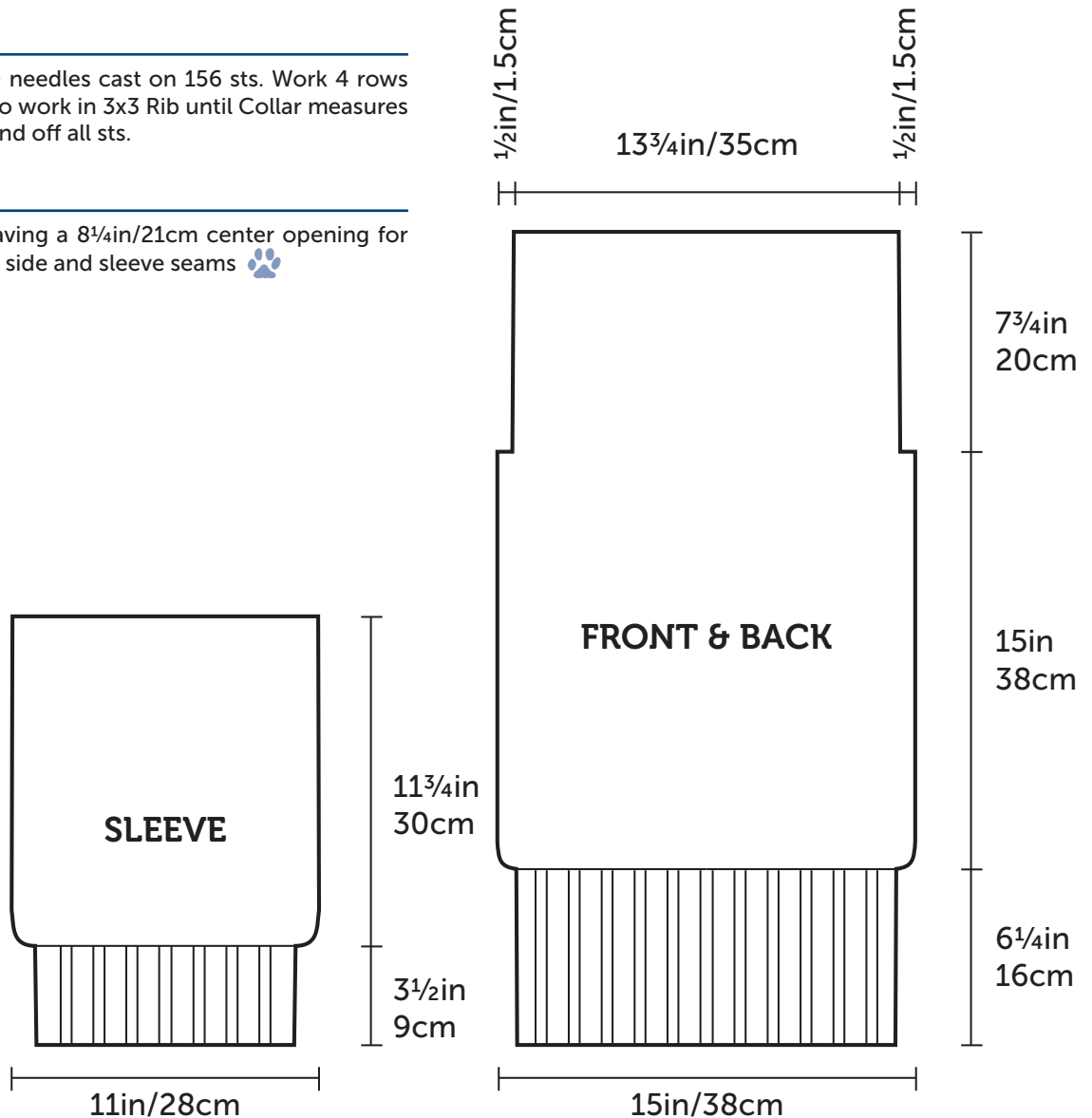
When piece measures 11³/₄in/30cm from Border (31 lace rows worked), cut off yarn and weave in ends.

COLLAR

Using size US 4 (3.5mm) needles cast on 156 sts. Work 4 rows in Tubular st, then cont to work in 3x3 Rib until Collar measures 6¹/₄in/16cm from beg. Bind off all sts.

FINISHING

Sew shoulder seams, leaving a 8¹/₄in/21cm center opening for neck. Set in sleeves. Sew side and sleeve seams 🐾





FEELING LACED PULLOVER

Diamond Stitch

Chart C

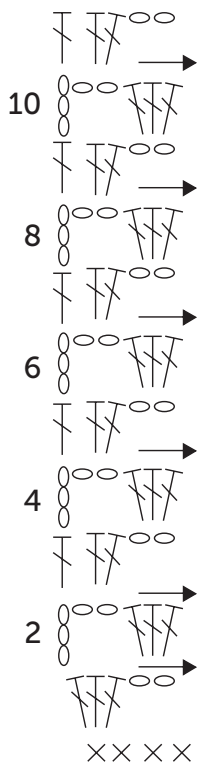


Chart B

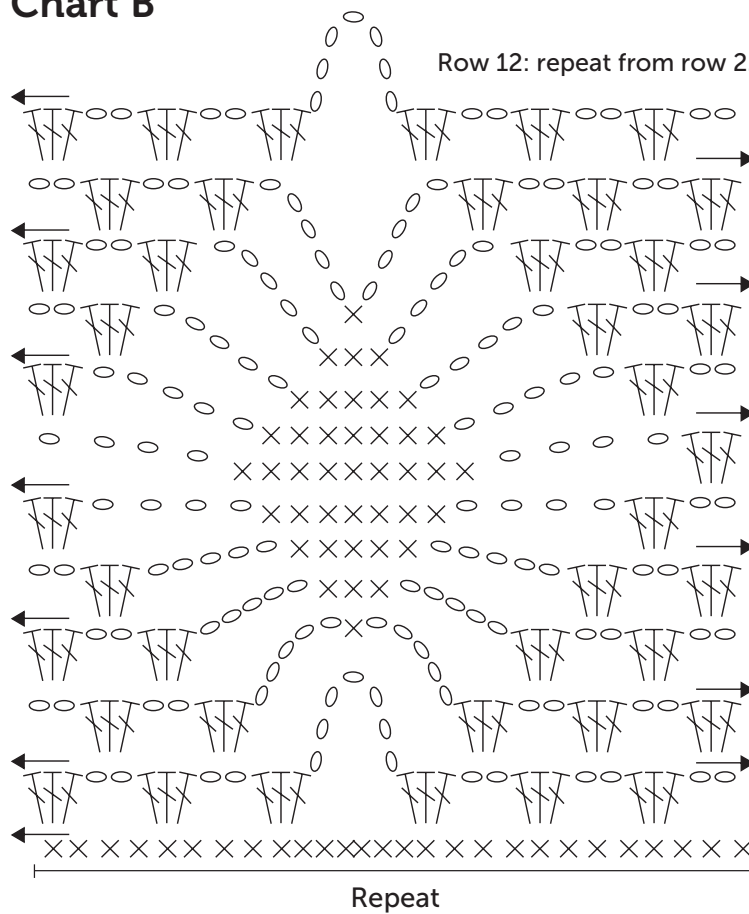
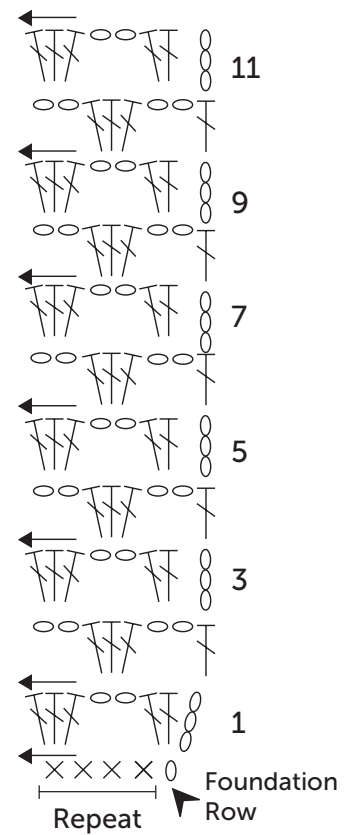


Chart A



Key

- ▲ beginning (beg)
- chain (ch)
- × single crochet (sc)
- ⌈ double crochet (dc)
- ↔ direction of work