



SUPERSOFT
WING-SLEEVED CARDI



SUPERSOFT WING-SLEEVED CARDI

SIZE

Italian size 44 = US size 10 (approx. Medium).

MATERIALS

- 9 50g balls of Lana Gatto **SUPERSOFT** shade #5241 Purple.
- One pair size US 6 (4 mm) needles or size to obtain gauge.
- One pair size US 7 (4.5 mm) needles or size to obtain gauge.
- Cable needle.
- Size D-3 (3.25 mm) crochet hook.
- Tapestry needle with rounded point.
- Two buttons.

STITCHES

USING KNITTING NEEDLES:

Tubular stitch (worked on even number of sts)

Row 1: k2, * wyif, slip 1 st purlwise, wyib, k1, rep from * to end.

Row 2: wyif, slip 1 st purlwise, * k1, wyif, slip 1 st purlwise, wyib, rep from * to last st, k1.

Rep these 2 rows.

Tubular stitch (worked on odd number of sts)

Row 1: k1, * wyif, slip 1 st purlwise, wyib, k1, rep from * to end.

Row 2: wyif, slip 1 st purlwise, * k1, wyif, slip 1 st purlwise, wyib, rep from * to end.

Rep these 2 rows.

2x2 Rib

3x3 Rib

Garner stitch

Stockinette stitch

Seed stitch (worked on even number of sts)

Row 1: * k1, p1; rep from *.

Row 2: p the knit sts and k the purl sts.

Rep Row 2 throughout for Seed st.

Large Cable Motif (worked on 24 sts) See Chart.

On even rows (WS) work k the knit sts, p the purl sts, the yo and the slipped sts. Rep Rows 1-16. Work as follows the slipped st: with yarn in back, slip 1 st to right needle purlwise. 5 left crossed sts (slip 3 sts to cable needle and hold to front of work, k 2 sts, k 3 sts from cable needle). 5 right crossed sts (slip 2 sts to cable needle and hold to back of work, k 3 sts, k 2 sts from cable needle).

USING CROCHET HOOK:

Reverse single crochet (rev sc)

Insert hook in next st, working from left to right, yo, pull up a loop (lp), yo, pull through 2 lps on hook.

USING TAPESTRY NEEDLE:

Darning stitch

GAUGE

16 sts and 25 rows to 4in/10cm over Seed st and Stockinette st using size US 7 (4.5mm) needles.

Large Cable Motif pattern (24 sts) measures 3.5in (9cm.)

NOTE!

Work in one piece, starting at lower edge of Left Front.

ABBREVIATIONS

beg	begin[ning]	p	purl
cm	centimeters	rem	remain[ing]
cont	continue[ing]	rep	repeat
dec	decrease[ing]	RS	right side[s]
dp	double-pointed	st[s]	stitch[es]
g	grams	wyib	with yarn in back
in	inch[es]	wyif	with yarn in front
inc	increase[ing]	WS	wrong side[s]
k	knit	yo	yarn over
mm	millimeters		

LEFT FRONT

With smaller needles cast on 49 sts. Work 4 rows in Tubular st. Then work 6 rows in 3x3 Rib starting 1st row (RS) with p3 and ending with 1 st in Garner st (for selvedge on left side). Change to larger needles and, inc 1 st at each end on next row (there are 51 sts), continue as follows: 20 sts in Seed st, 3 sts in Stockinette st, 24 sts in Large Cable Motif, 3 sts in Stockinette st, 1 st in Garner st (selvedge). When piece measures 14³/₄in/36cm from beg, shape left sleeve by casting on 8 sts at beg of next row (RS), 8 sts at beg of following alternate row and 9 sts at beg of next alternate row. When sleeve measures 5¹/₂in/14cm, shape neck by binding off 7 sts at beg of next WS row. At same side bind off on every alternate row: 2 sts once and 1 st twice. When neck shaping measures 1¹/₂in/4cm leave on a spare needle rem 65 sts.



SUPERSOFT WING-SLEEVED CARDI

RIGHT FRONT

Work to correspond to left front, reversing all shaping by working sleeve shaping on WS rows and neck shaping on RS rows.

BACK

With larger needles, work in Seed st the Left Front sts from spare needle dec 5 sts evenly distributed along Cable Motif (60 sts rem), cast on 15 sts for neck edge, work in Seed st the Right Front sts from spare needle dec 5 sts evenly distributed along Cable Motif (60 sts rem). There are 135 sts. When Back measures 6¼in/16cm shape sleeves by binding off 8 sts at beg of next 4 rows and 9 sts at beg of next 2 rows. Dec 1 st at each side of next and alternate row, then every 4th row twice and every 8th row once. When Back measures 13in/33cm from Sleeve shaping, continue with smaller needles dec 7 sts evenly distributed on next row and work the rem 68 sts in 3x3 Rib for 6 rows, starting end ending with 1 st in Garter st for selvedge. Work last 4 rows in Tubular st, bind off in Darning st with tapestry needle.

COLLAR

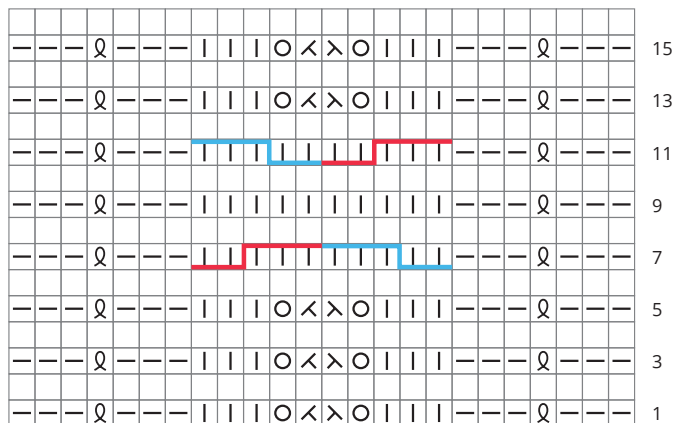
With smaller needles cast on 30 sts. Work 4 rows in Tubular st and 4 rows in 2x2 Rib. Cont in 2x2 Rib and on next row, inside first and last 8 sts, make 1 buttonhole (yo, p2tog). When pieces measures 20¼in/52cm from beg, work 4 rows in Tubular st, bind off in Darning st with tapestry needle.

FINISHING

With smaller needles pick up and k 57 sts along wrist of left sleeve and, for cuff, work 5 rows in 3x3 Rib, 4 rows in Tubular st, bind off in Darning st with tapestry needle. Work same cuff for right sleeve.

Sew side and sleeve seams. Using larger needles, with RS facing pick up and k72 sts from lower edge to neck shaping along Right Front opening side. Bind off all sts. Using crochet hook with RS facing work a rev sc row along bound off sts. Using larger needles, with RS facing pick up and k72 sts from neck shaping to lower edge along Left Front opening side. Bind off all sts. Using crochet hook, with RS facing work a rev sc row along bound-off sts. Sew Collar along neck edge: the 2 buttonhole are on Right Front. Sew on buttons to correspond buttonholes 🐾

Row 17: repeat from Row 1



24 sts

Key

- | K > ssk Q Sl st ||||| 5 st Right Cable
- P < k2tog O yo ||||| 5 st Left Cable

Each square corresponds to 1 st and 1 row.

On even rows, K the knit sts and P the yo and purl sts.



SUPERSOFT WING-SLEEVED CARDI

