



FEELING
VINTAGE-STYLED CARDI



FEELING VINTAGE-STYLED CARDI

SIZE

Italian size 44 = US size 10 (approx. Medium).

MATERIALS

- 7 50g balls of Lana Gatto **FEELING** shade #13340 Dark Green.
- One pair size US 7 (4.5mm) needles or size to obtain gauge.
- Cable needle.
- Size G-6 (4 mm) crochet hook.
- Sewing needle.
- 2 wooden buttons.

STITCHES

USING KNITTING NEEDLES:

Garner stitch

Stockinette stitch

Reverse Stockinette stitch

Tubular stitch (work on odd number of sts)

Row 1: k1, * wyif, slip 1 st purlwise, wyib, k1, rep from * to end.
Row 2: wyif, slip 1 st purlwise, * k1, wyif, slip 1 st purlwise, wyib, rep from * to end. Rep these 2 rows.

Tubular stitch (worked on even number of sts)

Row 1: k2, * wyif, slip 1 st purlwise, wyib, k1, rep from * to end.
Row 2: wyif, slip 1 st purlwise, * k1, wyif, slip 1 st purlwise, wyib, rep from * to last st, k1.
Rep these 2 rows.

1x1 Rib

4x6 Rib (work on a multiple of 10 sts plus 6 sts)

Row 1 (RS): p6, * k4, p6; rep from * to end.
Row 2 and all even rows: k the knit sts and p the purl sts.

Cable patt (work on a multiple of 8 sts)

Row 1 (RS): * p2, k4, p2; rep from * to end.
Row 2: k the knit sts and p the purl sts.
Row 3: * p2, 4 left crossed sts (slip 2 sts to cable needle and hold to front of work, k 2 sts, k 2 sts from cable needle), p2; rep from * to end.
Row 4: k the knit sts and p the purl sts.
Rep rows 1- 4.

Diamond patt (work on a multiple of 10 sts plus 4 sts)

See Pattern Chart.

Work all WS row as follows: k the knit sts and p the purl sts. Work rows 1–24, then repeat these 24 rows every time. Work as follows the crossed sts: 4 right crossed sts (slip 2 sts to cable needle and hold to back of work, k 2 sts, k 2 sts from cable needle), 3 right crossed sts (slip 1 st to cable needle and hold to back of work, k 2 sts, p1 st from cable needle), 3 left crossed sts (slip 2 sts to cable needle and hold to front of work, p1 st, k 2 sts from cable needle).

USING CROCHET HOOK:

Single crochet

GAUGE

23 sts and 26 rows to 4in/10cm over Diamond patt using size US 7 (4.5mm) needles.

ABBREVIATIONS

beg	begin[ning]	rem	remain[ing]
cm	centimeters	rep	repeat
dec	decrease[ing]	RS	right side[s]
g	grams	sc	single crochet
in	inch[es]	st[s]	stitch[es]
k	knit	WS	wrong side[s]
mm	millimeters	wyib	with yarn in back
p	purl	wyif	with yarn in front
patt	pattern		

BACK

With size US 7 (4.5mm) needles cast on 78 sts. Work 4 rows in Tubular st. Then work 19 rows in 4x6 Rib starting and ending each row with a selvedge st in Garner st.

Next row (WS): k2, k f-b (inc 1 st by knitting into the front and back of next st), k2, k f-b, k1, (p4, k6) 6 times, p4, k1, (k f-b, k2) twice. There are 82 sts.

Continue to work next rows as follows: 1 st in Garner st (selvedge), 3 sts in Stockinette st, 74 sts in Diamond patt, 3 sts in Stockinette st, 1 st in Garner st (selvedge). When Back measures 12³/₄/31cm from Rib Border, shape armhole binding off 3 sts at beg of next 2 rows. Work first and last 3 sts in Stockinette st and, inside these edge sts, dec each side 1 st every other row 5 times. When armhole measures 6³/₄in/16cm, bind off rem 66 sts.



FEELING VINTAGE-STYLED CARDI

LEFT FRONT

With size US 7 (4.5mm) needles cast on 63 sts. Work 4 rows in Tubular st. Then work 20 rows in 4x6 Rib starting with a selvedge st in Garter st and 1 st in Stockinette st, work 60 sts rib and end with a selvedge st in Garter st. Dec 2 sts inside left selvedge on last row. Continue to work as follows: 1 st in Garter st (selvedge), 1 st in Stockinette st, 1 st in Reverse Stockinette st, 54 sts in Diamond patt, 1 st in Reverse Stockinette st, 2 sts in Stockinette st, 1 st in Garter st (selvedge). When piece measures 12 ¼/31cm from Rib Border, shape armhole binding off 3 sts at beg of next WS row. Work last 3 sts in Stockinette st and, inside these edge sts, dec each side 1 st every other row 4 times. When armhole measures 4in/10cm, shape neck binding off 10 sts at beg of next RS row, then bind off every other row at neck edge 5 sts, 4 sts and 3 sts 4 times. When neck shaping measures 2¼/6cm, bind off rem 23 sts for shoulder.


RIGHT FRONT

With size US 7 (4.5mm) needles cast on 43 sts. Work 4 rows in Tubular st. Then work 20 rows as follows: 1 selvedge st in Garter st, work 40 sts 4x6 Rib (starting with k4), 1 st in Stockinette st and end with a selvedge st in Garter st. Dec 2 sts inside right selvedge on last row. Continue to work as follows: 1 st in Garter st (selvedge), 2 sts in Stockinette st, 1 st in Reverse Stockinette st, 34 sts in Diamond patt, 1 st in Reverse Stockinette st, 1 st in Stockinette st, 1 st in Garter st (selvedge). When piece measures 12¼in/31cm from Rib Border, shape armhole binding off 3 sts at beg of next RS row. Work first 3 sts in Stockinette st and, inside these edge sts, dec each side 1 st every other row 4 times. When armhole measures 4in/10cm, shape neck binding off 9 sts at beg of next WS row, then dec 1 st twice every other row at neck edge. When neck shaping measures 2¼/6cm, bind off rem 23 sts for shoulder.

SLEEVES (MAKE 2)

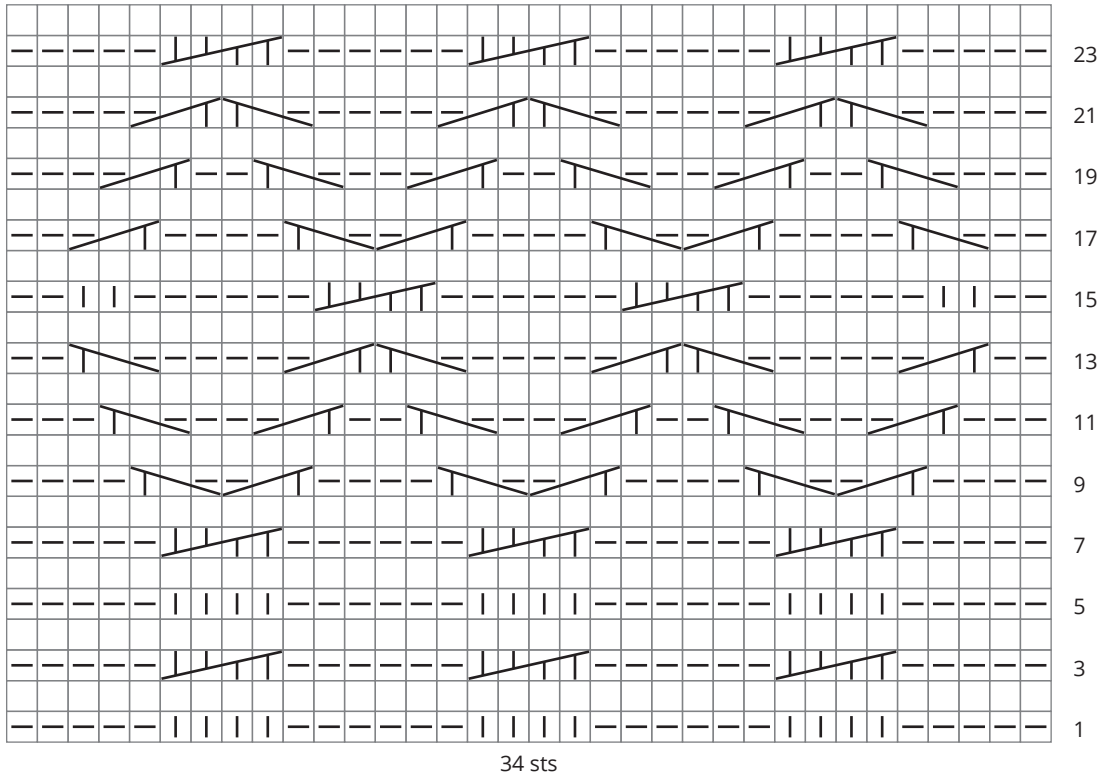
With size US 7 (4.5mm) needles cast on 31 sts. Work 4 rows in Tubular st. Then work 11 rows in 1x1 Rib, inc 11 sts evenly distributed on last row. There are 42 sts. Work in Diamond patt starting from Row 3 and working at each side 1 st in Garter st (selvedge). Inc 1 st each side on Row 9 patt and every 6th row 5 times, then every 8th row 5 more times. When Sleeve measures 13/33cm from Rib Border, shape cap binding off 4 sts at beg of next 2 rows. Work first and last 2 sts in Stockinette st and, inside these edge sts, dec each side 1 st every other row twice, every 6th row 5 times. Work 6 rows even, then dec each side 1 st every other row twice **AT THE SAME TIME**, when cap measures 5½in/14cm work p2tog at center of each Diamond patt (3 decs made), on next alternate row work p3tog at center of each Diamond patt (6 decs made), on following alternate row work p3tog over each below dec (6 decs made), then on next alternate row dec 1 st at each side and sssk (double dec) on each crossed sts group. There are 3 groups (3 double decs made). When cap measures approx 6¾/17cm, bind off rem 15 sts.

FINISHING






Sew shoulder seams. Using crochet hook work a sc row around neckedge (82 sc). Using needles pick up and k these 82 sts working in front loop of each sc. Work 2 rows in Reverse Stockinette st and 20 rows in Cable patt, with selvedge st at each side. Bind off all sts. Using crochet hook work a sc row along side edges and last row. Using crochet hook work a sc row along opening edge of each Front. Set in sleeves. Sew side and sleeve seams. Sew buttons on left side of Collar, inside 8 sts from edge: one button corresponding to Row 5 and other button corresponding to Row 15 



FEELING VINTAGE-STYLED CARDI



Key

-  K
  P
 Each square corresponds to 1 st and 1 row.
 On even rows, K the knit sts and P the purl sts.
-  4 right-crossed sts (slip 2 sts to cable needle and hold to back of work, K 2 sts, K 2 sts from cable needle)
-  3 right-crossed sts (slip 1 st to cable needle and hold to back of work, K 2 sts, P1 st from cable needle)
-  3 left-crossed sts (slip 2 sts to cable needle and hold to front of work, P1 st, K 2 sts from cable needle)



FEELING VINTAGE-STYLED CARDI

