



MISINA
LARGE COLLAR CARDI



MISINA

LARGE COLLAR CARDI

SIZE

Italian size 44 = US size 10 (approx. Medium).

MATERIALS

- 10 50g balls of Lana Gatto **MISINA** shade #2319 Orange.
- One pair size US 6 (4mm) needles or size to obtain gauge.
- One pair size US 4 (3.5mm) needles or size to obtain gauge.
- Three double-pointed needles.
- Cable needle.
- Tapestry needle with rounded point.
- Four wooden toggles, each 2in long.

STITCHES

USING KNITTING NEEDLES:

Garter stitch

Stockinette stitch

Reverse Stockinette stitch

Tubular stitch (work on odd number of sts)

Row 1: k1, * wyif, slip 1 st purlwise, wyib, k1, rep from * to end.

Row 2: wyif, slip 1 st purlwise, * k1, wyif, slip 1 st purlwise, wyib, rep from * to end. Rep these 2 rows.

3x3 Rib

Row 1: * k3, p3; rep from * to end.

Row 2: k the knit sts and p the purl sts.

Rep Row 2 for k3, p3 rib.

Cable (worked over 13 sts)

Row 1 (RS): p2, k 9, p2.

Row 2 and all even rows: k the knit sts and p the purl sts.

Rows 3 and 5: rep Row 1.

Row 7: p2, 6 right crossed sts (slip 3 sts to cable needle and hold to back of work, k 3 sts, k 3 sts from cable needle), k3, p2.

Rows 9 and 11: rep Row 1.

Row 13: p2, k3, 6 left crossed sts (slip 3 sts to cable needle and hold to front of work, k 3 sts, k 3 sts from cable needle), p2.

Row 14: k the knit sts and p the purl sts. Rep 1-14 rows.

Diamond Pattern (worked over 20 sts) See Chart.

Work rows 1-27, then rep from Row 2 to Row 27. On even rows (WS) k the knit sts and p the purl sts.

Work crossed stitches as follows:

4 Left crossed sts= slip 2 sts to cable needle and hold to front of work, k 2 sts, k 2 sts from cable needle; **3 Right crossed sts=** slip 1 st to cable needle and hold to back of work, k 2 sts, k1 from cable needle; **3 Left crossed sts=** slip 2 sts to cable needle and hold to front of work, k 1 st, k2 sts from cable needle; **2 Right crossed sts=** slip 1 st to cable needle and hold to back of work, k1 st, k1 from cable needle; **2 Left crossed sts=** slip 1 st to cable needle and hold to front of work, k 1 st, k1 sts from cable needle.

USING TAPESTRY NEEDLE:

Mattress stitch

GAUGE

20 sts and 29 rows to 4in/10cm over Reverse Stockinette st using size US 6 (4mm) needles.

26 sts and 29 rows to 4in/10cm over 3x3 Rib using size US 6 (4mm) needles.

Diamond Pattern (worked over 20 sts) measures 3in/8cm.

Cable (worked over 13 sts) measures 2in/5cm.

ABBREVIATIONS

beg	begin[ning]	rem	remain[ing]
cm	centimeters	rep	repeat
cont	continue[ing]	RS	right side[s]
dec	decrease[ing]	st[s]	stitch[es]
g	grams	tog	together
in	inch[es]	wyib	with yarn in back
k	knit	wyif	with yarn in front
mm	millimeters	WS	wrong side[s]
p	purl		

BACK

Using smaller needles, cast on 102 sts and, for border, work 4 rows in Tubular st and 17 rows in 3x3 Rib. Change to larger needles. Knit 1 row on WS, dec 13 sts evenly distributed. 89 sts remain. Cont to work in Reverse Stockinette st until piece measures 11½in/29cm from dec row after border, ending with a WS row.



MISINA

LARGE COLLAR CARDI

Cont in Reverse Stockinette st and shape armhole as follows:
Row 1 (RS): p3, dec 2 sts working SSSP (slip 3 sts separately to right needle as if to knit, slip these 3 sts back onto left needle. Insert right needle through their inback loops into the 3rd st, the 2nd st and then the first. Purl them together: 3 sts become 1 st), p to last 6 sts, dec 2 sts working p3tog, p3.

Row 2: k.

Row 3: as Row 1.

Row 4: k.

Row 5: as Row 1.

Row 6: k.

Row 7: p.

Row 8: k.

Rep last 4 rows twice more. 69 sts remain.

Work even until armhole measures 6³/₄in/17cm. Shape neck.

Next row (RS): p25, join a 2nd ball of yarn and bind off center 19 sts, p to end. Working both sides at once bind off at each neck edge 4 sts once and 3 sts once. Bind off rem 18 sts each side for shoulders.

RIGHT FRONT

Using smaller needles cast on 48 sts and, for border, work 4 rows in Tubular st and 17 rows in 3x3 Rib. Change to larger needles. Knit 1 row on WS, dec 8 sts evenly distributed. 40 sts remain.

Cont to work as follows: 13 sts Cable, 2 sts in Stockinette st, 20 sts Diamond Pattern, 5 sts in Reverse Stockinette st. Cont to work as established until piece measures 11¹/₂in/29cm from dec row after border, ending with a WS row.

Cont in Reverse Stockinette st and shape armhole as follows:

Row 1 (RS): p to last 6 sts, dec 2 sts working p3tog, p3.

Row 2: k.

Row 3: as Row 1.

Row 4: k.

For armhole cont to dec as before on next and every 4th row twice more. At the same time, on opposite side shape neck dec 1 st every other row 4 times and every 4th row 8 times. Bind off rem 18 sts for shoulder when piece measures same as Back.

LEFT FRONT

Work to correspond to Right Front, reversing all shaping.

RIGHT SLEEVE

Using smaller needles cast on 45 sts and, for border, work 4 rows in Tubular st. Cont in 3x3 Rib starting with p3. When sleeve

measures 2¹/₂in/6.5cm from beg inc at beg of row (right side on RS rows) 1 st every 6th row 8 times and every 8th row 7 times.

AT THE SAME TIME inc at end of row (left side on RS rows) 1 st every 6th row 15 times and every 8th row 2 times. There are 77 sts. When sleeve measures 15¹/₄in/39cm from beg, shape cap.

Next row (RS): work 5 sts, then dec 6 sts as follows: slip next 3 sts onto dp needle and hold to back of work, slip next 3 sts onto another dp needle and hold to back previous dp needle, then work k tog next st on needle with the corresponding first st of both dp needles, work k tog next st on needle with the corresponding 2nd st of both dp needles, work k tog next st on needle with the corresponding 3rd st of both dp needles, cont to work until to last 14 sts, then dec 6 sts as follows: slip next sts onto dp needle and hold to front of work, slip next 3 sts onto dp needle and hold to back of work, slip next 3 sts onto another dp needle and hold to back previous dp needle, slip separately on right needle the first st on dp needle to front and the first st on both dp needles on back, insert left needle into these 3 sts from left to right and knit them tog (3 sts become 1), slip separately on right needle the 2nd st on dp needle to front and the 2nd st on both dp needles on back, insert left needle into these 3 sts from left to right and knit them tog (3 sts become 1), slip separately on right needle the 3rd st on dp needle to front and the 3rd st on both dp needles on back, insert left needle into these 3 sts from left to right and knit them tog (3 sts become 1), work last 5 sts of this row. Rep these decs every 10th row 3 more times.

Work even until sleeve cap measures 6in/15cm. Bind off rem 29 sts.

LEFT SLEEVE

Work to correspond to Right Sleeve, reversing shaping.

RIGHT NECK AND OPENING EDGING

Using smaller needles cast on 156 sts. Work 6 rows in Tubular st and 8 rows in 3x3 Rib. Cont in 3x3 making 4 buttonholes as follows: work 8 rows only on first 79 sts, leaving rem sts on a spare needle. Leave these sts on a spare needle, join a 2nd ball of yarn and work 8 rows separately on next 24 sts, cut off yarn, leave these sts on a spare needle, (rejoin yarn and work 8 rows separately on next 24 sts, cut off yarn, leave these sts on a spare needle), rejoin yarn and work 8 rows separately on rem sts.

Work 8 rows in 3x3 Rib over all 156 sts, then at beg of next WS row bind off 81 sts and, at same edge, bind off every other row 2 sts 10 times and 3 sts 6 times. When piece measures 6in/15cm from beg, bind off rem 37 sts for half Back neck-edge.



MISINA

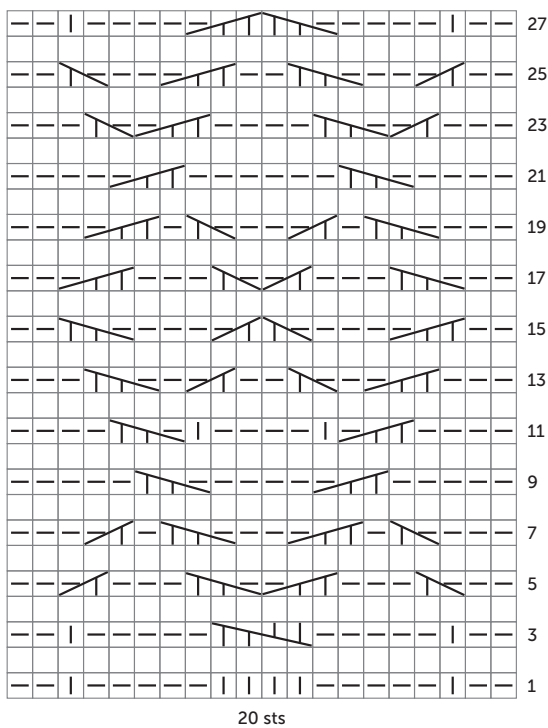
LARGE COLLAR CARDI

LEFT NECK AND OPENING EDGING

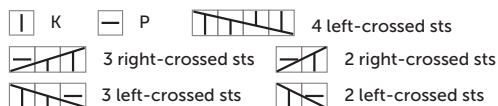
Work as Right Edging, reversing shaping and without buttonholes.

FINISHING

Sew shoulder seams. Join Right and Left neck-and-opening Edging. Place seam at center of Back neck-edge and sew Edging in mattress st along neck shaping and opening. Set in sleeves. Sew side and sleeve seams. Sew toggles on Left Front to correspond to buttonholes 🐾



Key



Each square corresponds to 1 st and 1 row.
On even rows, K the knit sts and P the purl sts.
Work Rows 1-27, then rep from Row 2 to Row 27.

